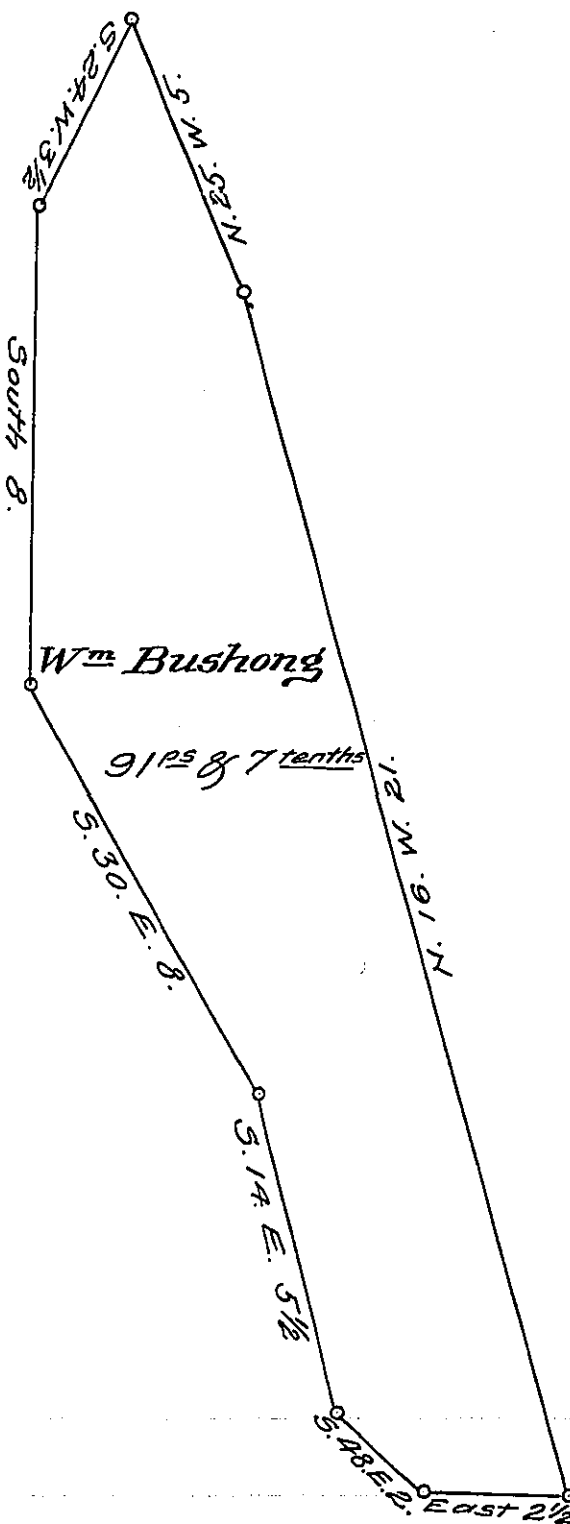


York County Shore

Lancaster County Shore



A Draught of Birch Island situate in the River Susquehanna in Conestogoe township Lancaster County opposite land of Conrad Heble on the Lancaster Shore & beside Maple Island on the East directly below Weisingers falls, Containing ninety one perches and seven tenths Strict Measure surveyed in Pursuance of a Warrant dated the 24th day of October A.D. 1816. granted to William Bushong.

p^c Jacob Hibshman D.S.

To Jacob Spangler Esq^r }
 Surveyor General }

IN TESTIMONY that the above is a copy of the original remaining on file in the Department of Internal Affairs of Pennsylvania, made conformably to an Act of Assembly approved the 16th day of February, 1833, I have hereunto set my Hand and caused the Seal of said Department to be affixed at Harrisburg, this twenty sixth day of November 1907.

Amey Houck
 Secretary of Internal Affairs.